

LPRC500

New License Plate Recognition Camera

with a Dual-core Processor for Outstanding Performance



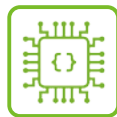
LPRC500 is ZKTeco's new generation of license plate recognition cameras adopting a 0.5 TOPS chip and an embedded deep learning algorithm. The camera can provide higher license plate recognition performance, widely adaptable to parking and access control environments.

Moreover, LPRC500 can operate independently offline after being imported allowlist and blocklist data via a web browser, which usually applies in monthly parking management, especially under scenarios like the factory, governmental building, residential area, etc. All captured pictures and recordings would be saved in the camera.

Features



Embedded Deep Learning LPR Algorithm



AI Chip with 0.5 TOPS



Embedded Allowlist and Blocklist



ONVIF Protocol, for Video Surveillance



Free SDK and push protocol supporting 3rd-party integration



5 MP



PWM technology adjustable fill light



3.6-10.8mm electriczoom lens



Standard 32GB TF card

Specifications

Model	LPRC500
License Plate Recognition Specifications	
Platform	Sigmastar
License Plate Number Recognition Accuracy Rate	Day ≥ 98%, night ≥ 95%
Electronic Shutter Speed	1/30s(default)
Recognition Speed	90ms
Classification	License plate number
Adaptable Speed of Car	≤20 km/h
Recognition Distance	3m to 10m (the recommended distance is 3m to 5m)
Output Information	License plate number, License plate picture, Access time
Supported Regions	Thailand, Argentina, Mexico, Chile, Colombia, Saudi Arabia, Brazil, Peru, Mongolia, China, Indonesia, Uzbekistan, India, Myanmar, Vietnam, Cambodia,etc
Offline Working Parameters	
Allowlist	1,500
Blocklist	1,500
Monthly Parking	10,000
Entry and Exit Records	10,000
Captured Pictures	10,000
Camera Parameters	
CPU	Dual-core CPU A7@900MHz 0.5 TOPS
Flash	128MB
Image Sensor	1/2.7" 5MP CMOS sensor
Illumination	0.1Lux (Default)
Lens	Autofocus (from 3.2mm to 11.1 mm)
Resolutions	2304*1296P, 1920*1080, 1280*720P, 704*576P
Compression	H.264 / H.265 / MJPEG
Frame Rate	1 to 25 frames; 25 frames by default (1920*1080 pixels)
Pixel	5MP
Communication Protocol	TCP/IP (10/100Mbps), RTSP, ONVIF,FTP, PUSH
I/O Interface	Two relays, RS485, AUX I/O, Barrier status input, Traffic light output
SD Storage	Default 32GB, maximum support 128GB
Picture Format	JPG
Recognition Trigger	Video trigger (by default), loop detection
Protection Level	IP65 and IK10
Working Voltage	12V DC
POE	Optional
Illuminator Number	4
Illuminator On/Off Control	Auto, manual

Smart Illumination	Visible light automatic sensing, based on ambient brightness adaptive
Power	≤7.5W
Working Temperature	-30°C to 70°C
Working Humidity	≤90%
Dimensions (L*W*H)	460 * 156 * 120 (mm)
Weight	2.5kg

System Topology



Applications



Communities



Business Centers



Governmental Buildings



Industrial Parks

Accessory Products



LPR-Fixed Column



LPR-Fill Light



LPR-Display Screen (Optional)

